



PRCY-Toolkit Manual

Table of Contents:

[1. Introduction](#)

[2. Installation](#)

[2a. Windows](#)

[2b. Linux](#)

[2c. Mac](#)

[3. Wallet Settings](#)

[4. Basic Settings/Usage](#)

[5. Tools](#)

[5a. Bootstrapper](#)

[5b. POA Miner](#)

[5c. Updates Page](#)

[5d. Explorer](#)

[5e. Get your IP](#)

[6. Advanced Settings/Usage](#)

[7. New features in latest version](#)

Disclaimer: You are using PRCY-Toolkit at your own risk.



1. Introduction

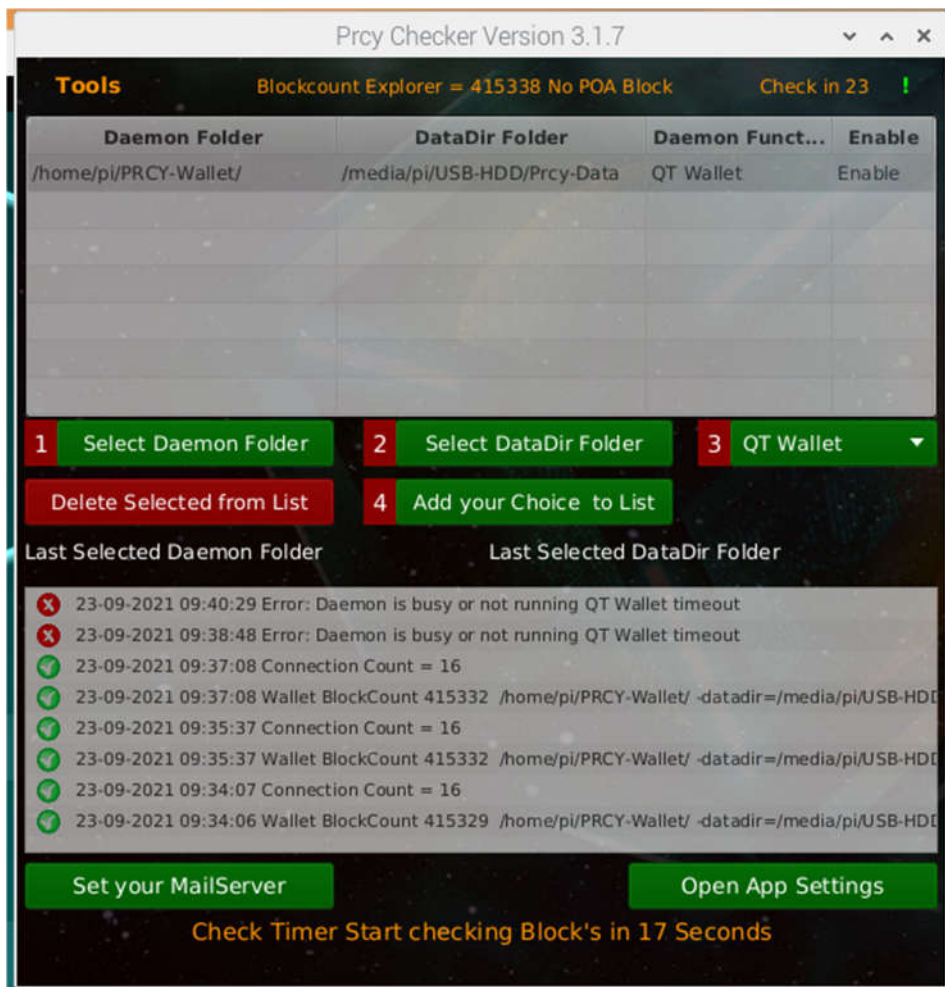
After many weeks of testing and adjustments, it is time to make PRCY-Toolkit Public. Many thanks to all testers.

PRCY Toolkit is an advanced GUI tool to keep track of your Daemons like QT-Wallet, Masternode(s) and Staker(s).

It is written in Java and supported by Windows, Linux, Raspberry PI and Mac.

Features include:

- Watch over your Daemons like QT-Wallet, Masternode and Stakers.
- Test for Connections and add Connections when you have less than 3.
- Test for blockcount and E-mail if the difference is more than 20 blocks from the Explorer
 - Clear banned nodes automatically
- Easily bootstrap your daemons (QT-Wallet)
 - Run POA for Windows and Linux
 - Watch live Debug information
 - Start/Stop Daemons
- Edit prcycoin.conf and masternode.conf.



Disclaimer: You are using PRCY-Toolkit at your own risk.



2. Installation

Before you start, join the telegram group <https://t.me/prcychecker>

There you will find Pinned Messages with the Download.

Follow the steps in this manual and you can setup and use PRCY-Toolkit easily.

2a. Windows Installation

1 - Download the ZIP file PRCY-Toolkit-Win.zip

2 - Extract the zip, which will create a new folder **PRCY-Toolkit-Win**
In this folder you will find the file **PRCY-Toolkit.exe** and a folder **JRE**.

JRE is the folder where we have the Java Runtime Environment.

No need to install Java on your system.

PRCY-Toolkit has to be started from this Folder.

Note: Do not move PRCY-Toolkit.exe without the JRE Folder. They have to both be in the same location.

You can make a shortcut if you like.

2b. Linux Installation

1a – **For Linux** Download the ZIP file PRCY-Toolkit-Linux.zip

1b – **For the Raspberry PI** Download the ZIP file PRCY-Toolkit-PI.zip

2 - Before you can start PRCY-Toolkit you have to install Java and JavaFX.

3 - Check what version of Java is on your Linux (PI).

In Terminal type

```
java --version
```

Result will be something like:

```
openjdk version "11.0.11" 2021-04-20
```

```
OpenJDK Runtime Environment (build 11.0.11+9-post-Raspbian-1deb10u1)
```

```
OpenJDK Server VM (build 11.0.11+9-post-Raspbian-1deb10u1, mixed mode)
```

Install Javafx: in Terminal type:

```
sudo apt-get install -y openjfx
```

If you don't see this like other Linux builds then we have to install Java.

In Terminal type:

```
sudo apt install openjdk-11-jre-headless
```

```
sudo apt install openjdk-11-jdk
```

Install Javafx. In Terminal type:

```
sudo apt-get install -y openjfx
```

4 - Extract the PRCY-Toolkit to your home folder.

When you have done this open this folder with the terminal and type:

```
sudo chmod +x *
```

Disclaimer: You are using PRCY-Toolkit at your own risk.



2c. Mac installation

- 1 - Download the file PRCY-Toolkit-Mac.zip
- 2 - Extract the zip, which will create a new folder **PRCY-Toolkit-Mac**
In this folder you will find the file PRCYToolkit.jar.
- 3 - Before you can start PRCY-Toolkit you have to install Java.
Download Java Runtime Environment (JRE) from <https://www.java.com> and install.

3. Wallet Settings

For all OS's, the minimum Settings you need in prcycoin.conf are:

`rpcuser=<Your Username>`

`rpcpassword=<Your Password>`

`rpcallowip=127.0.0.1`

`server=1`

```
prcycoin.conf - Notepad
File Edit Format View Help
rpcuser=<Your username>
rpcpassword=<Your Password>
rpcallowip=127.0.0.1
server=1
```

Explanation of each setting:

rpcuser: The username that will be used to accept commands from PRCY-Toolkit

rpcpassword: The password that will be used to accept commands from PRCY-Toolkit

rpcallowip: Allows Localhost to connect to the daemon

server: Make it a server so prcycoin-cli can talk to the daemon

The wallet/daemon must be restarted after changing these settings.

Disclaimer: You are using PRCY-Toolkit at your own risk.



4. Basic Settings/Usage

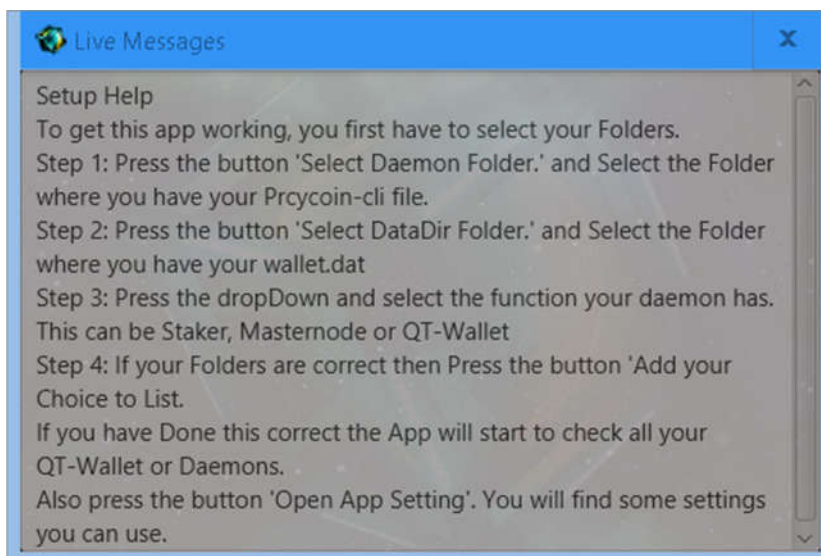
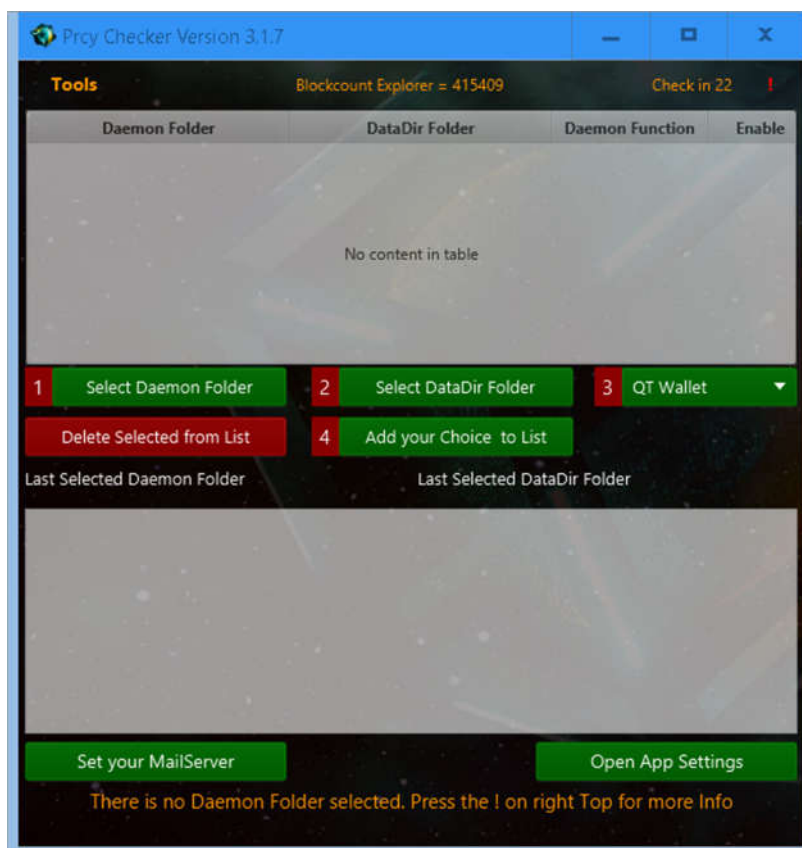
Starting PRCY-Toolkit

For Windows: PRCY-Toolkit.exe

For Linux: Start-PRCY-Toolkit.sh

For Mac: PRCYToolkit.jar

You will see the following screens:



Disclaimer: You are using PRCY-Toolkit at your own risk.



To add a Daemon (QT-Wallet) to PRCY-Toolkit you need to follow the steps below.
The text in the second window will always pop-up until they have been followed.

To get started, you first have to select your Folders.

Step 1: Press the button '**Select Daemon Folder**' and Select the Folder where you have your Prcycoin-cli file.

For Windows: the Folder will open with the folder "C:\Program Files\PrcyCoin"

If you have the daemon in a different location you can go to this folder and select it.

For all other Systems the locations will be different.

Step 2: Press the button '**Select DataDir Folder**' and Select the Folder where you have your wallet.dat

For Windows: this will open the Folder "C:\Users\yourname\AppData\Roaming\PRCYcoin".

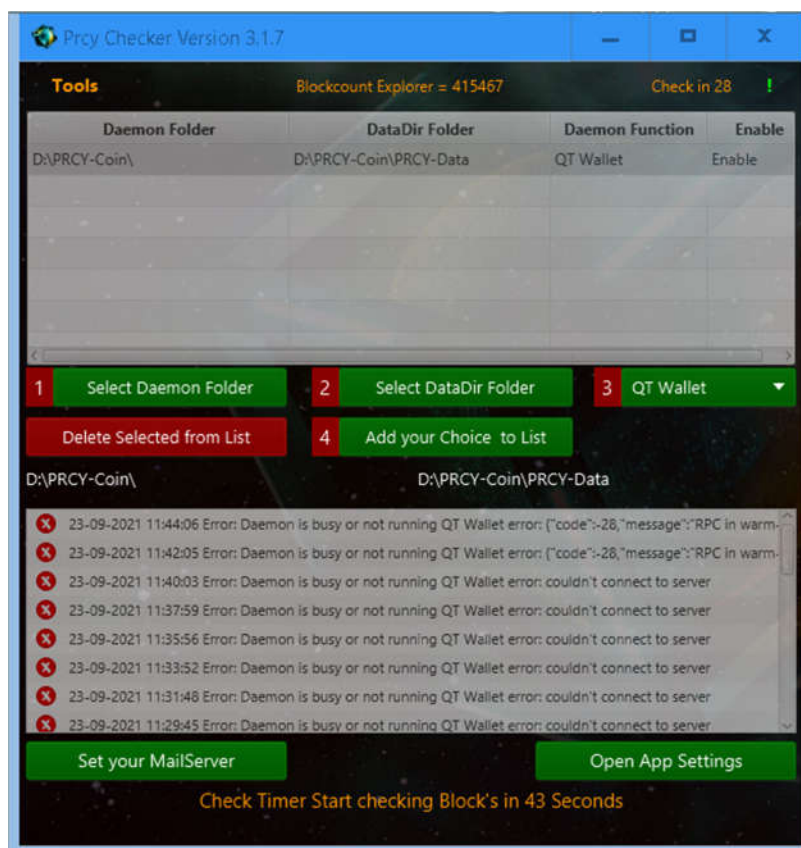
For all other Systems the locations will be different.

Step 3: Press the Dropdown and select the '**Daemon Function**' of this wallet. (QT-Wallet, Staker, or Masternode)

Step 4: If your Folders are correct, press '**Add your Choice to List**'. PRCY-Toolkit will start to check this daemon.

If you have more than 1 Daemon, you can add more, useful for stakers and masternodes.

If you have not started your daemon (QT-Wallet) yet you will see following screen.

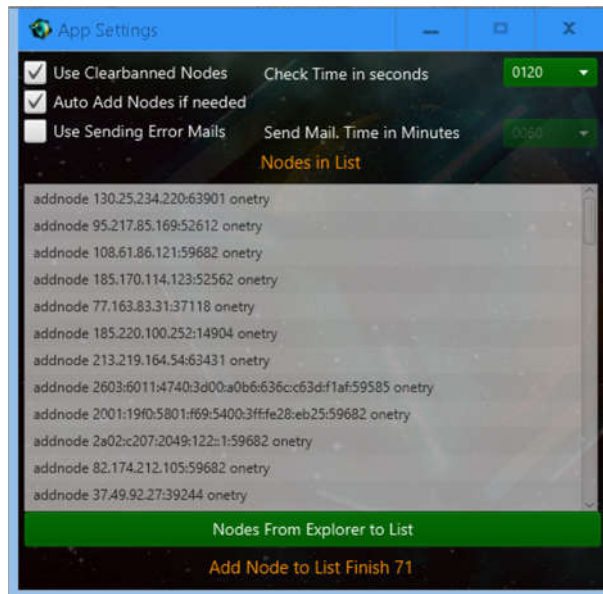


Start your daemon (or QT-Wallet) and you will see what is going on with it.

Disclaimer: You are using PRCY-Toolkit at your own risk.



The Button **'Open App Settings'** is to adjust some settings for PRCY-Toolkit.



With a new installation, there will be some default checkboxes selected.

'Use Clearbanned Nodes' - when the connection count is too low, the app will use the command **clearbanned**.

'Auto Add Nodes' - can add nodes when connection count is too low.

You also can set the frequency *in seconds* that the app will check the daemons. Recommended value is 120 = 2 minutes.

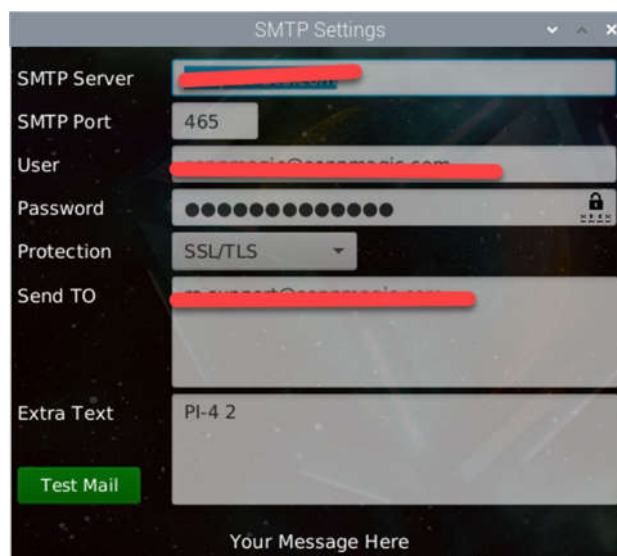
The Add Nodes List is updated automatically every hour.

Use **'Sending Error Mails'** is to send you an e-mail if you have setup the Mail Server.

If you enable this checkbox, you must also set the time in minutes.

The **'Set your MailServer'** button will let you setup your SMTP Server, if you would like to receive e-mails.

It is recommended to use your own Provider's SMTP settings.



Disclaimer: You are using PRCY-Toolkit at your own risk.

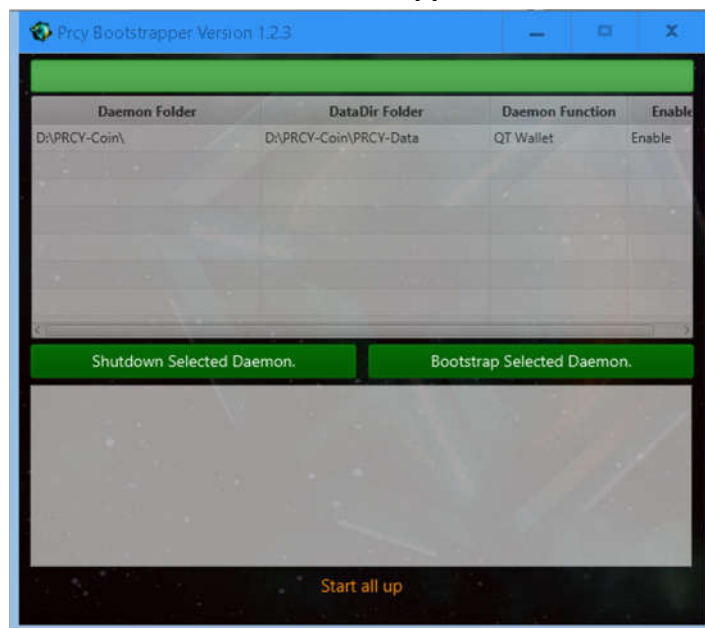


5. Tools

The 'Tools' Menu that you can find on top of PRCY-Toolkit. Included options are:

- Start Bootstraper
- POA Miner for Windows and Linux (This will not shown on the Raspberry PI.)
 - Open PrcyCoin Updates Page
 - Open PrcyCoin Explorer
 - Get your External IP (Wan IP)

5a. Bootstrapper



This is the easy way to bootstrap a daemon or a QT Wallet.

- First, Select your daemon in the list
- You can shut it down with the '**Shutdown Selected Daemon**' button (if not already)
 - Double check if the daemon is really shutdown to avoid corruption.
 - Click '**Bootstrap Selected Damon**' and the download will start.
 - The process log will be shown in the second list.
- Both buttons will be disabled from clicking until the bootstrap is finished.

Description of process:

- First, PRCY-Toolkit will download the bootstrap.
- Next, it will unzip, delete blocks, chainstate, peers.dat, banlist.dat and the folder database when this exists.
 - After unzipping, the bootstrapper will start to bootstrap the selected daemon.
- **Do not interrupt this process! It can even take some time to finish (this depends on the OS you are using).**
 - Once both buttons are enabled again, the bootstrap is finished.

Disclaimer: You are using PRCY-Toolkit at your own risk.



If you have more than 1 daemon, you can bootstrap the next daemon after selecting it. In this case, there is no additional download and bootstrapper will start bootstrapping the selected daemon.

If the bootstrapper is finished, you can close the bootstrapper. The downloaded bootstrap will then be deleted to clear your storage.

5b. POA Miner

Miner Location: D:\PRCY-Coin\PRCY-Checker-B4\PRCYChecker\B4\Objects\prcycoin-poa-minerd.exe
URL Daemon: http://127.0.0.100:59000
UN and PW: roland
CPU threads: Threads 4
Auto POA: Auto POA will Start 10 Block's before and Stop 02 Block's after POA.

Step 1: Select POA Miner Location with 2 clicks in the field.
Step 2: Set your Daemon URL. The default setting is http://127.0.0.100:59000 this can be changed if required.
Step 3: Set your Username and Password. This must be the same as in the Daemon conf file.
Step 4: Select your Thread count. By default the amount is set to half of your total core count.

WARNING!!
Using too many Threads may damage your CPU. USE AT YOUR OWN RISK!!
This form must stay open when the POA Miner is running.

We can not start POA! Daemon is not in sync.

```
We use this Parameters for the POA Miner.  
For your protection your Password is AES Encrypt.  
--url=http://127.0.0.100:59000  
--userpass=roland:27E0E16BF0EEE3E3031E3BFCCE0C673B7633E44E0C79DF1198679480139B142ABDFA6E1EC-  
--threads=4  
--no-longpoll  
--no-stratum  
--quiet  
--algo=script  
--retry-pause=15
```

Read the text carefully before you start the POA Miner.

Follow the steps on the screen.

Step 1: Select POA Miner Location by double clicking the field.

Step 2: Set your Daemon URL. The default setting is http://127.0.0.100:59000 this can be changed if required.

Step 3: Set your Username and Password. This must be the same as in the Daemon conf file.

Step 4: Select your Thread count. By default the amount is set to half of your total core count.

WARNING!!

Using too many Threads may damage your CPU. USE AT YOUR OWN RISK!!

This form must stay open when the POA Miner is running.

If you have setup the POA Miner, you also can set 'Auto PoA'.

This means that the Miner will start before the POA block and stop after the POA Block.

You also can start the miner manually.

Disclaimer: You are using PRCY-Toolkit at your own risk.



5c. Updates Page

This will open your browser and let you download the latest PrcyCoin Version.

<https://github.com/PRCYCoin/PRCYCoin/releases>

5d. Explorer

This will open your browser

<https://explorer.prcycoin.com/>

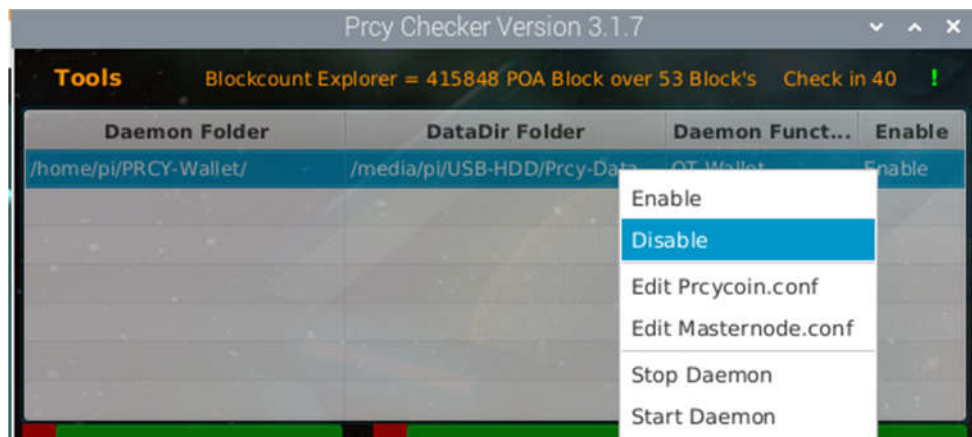
5e. Get your IP

This will open your browser and show you your Wan IP address needed for masternodes.

<https://www.whatismyip.com/>

6. Advanced Settings/Usage

Right click on a daemon will show you the menu options you have.



'Enable' means that the selected daemon will be checked by PRCY-Toolkit.

'Disable' means that this daemon will not be checked by PRCY-Toolkit. Useful if you have stopped a daemon.

'Edit Prcycoin.conf' will open a small editor where you can change some settings in prcycoin.conf for the selected daemon.

'Edit Masternode.conf' also opens the editor where you can add your masternode info.

'Stop Damon' will stop your selected daemon.

'Start Daemon' will start your selected daemon.

Double click on a selected daemon will open a debug form where you can see debug.log live.

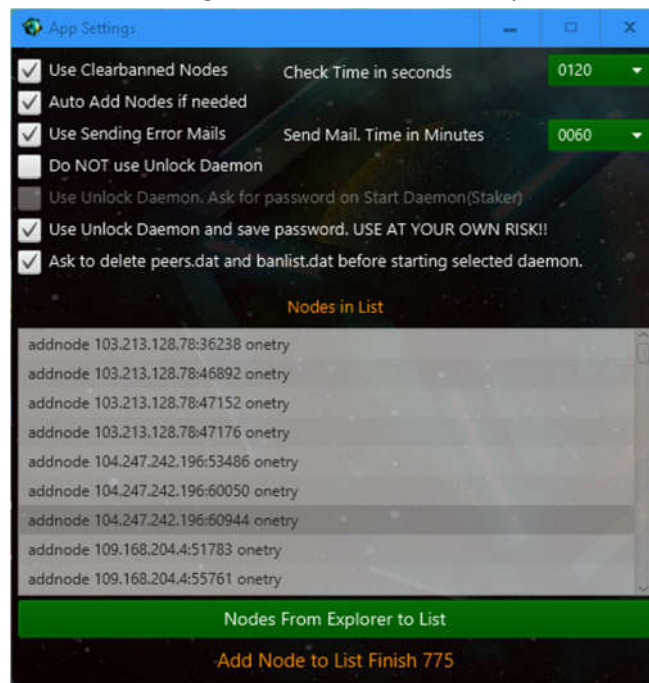
Disclaimer: You are using PRCY-Toolkit at your own risk.



7. New features in latest version

First of all PRCY-Toolkit has got a new name PRCY-Toolkit.

The Settings screen has some new options.



Ask to delete peers.dat and banlist.dat will delete those files for you.
The rest of the text in this form is self-explanatory. See **'Open App Settings'**

7a. Tools Menu

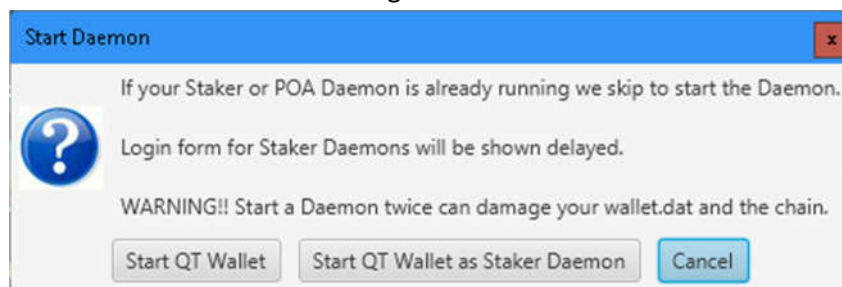
The Tools Menu has got 2 more options. See **'5 Tools'**

Start all daemons.

Starting all daemons will start all your daemons 1 by 1 when they are enabled. Also you will be ask for some user input.
You can also start your QT wallet if you like. Therefore you need the latest version from the update page.

See **'5c. Updates Page'**

Starting a QT Wallet.



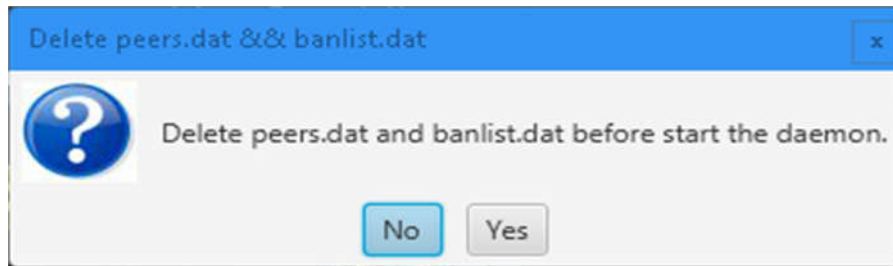
You can start the wallet as a daemon without the GUI or as a QT Wallet with GUI.

My Choice is Start QT Wallet.

Disclaimer: You are using PRCY-Toolkit at your own risk.

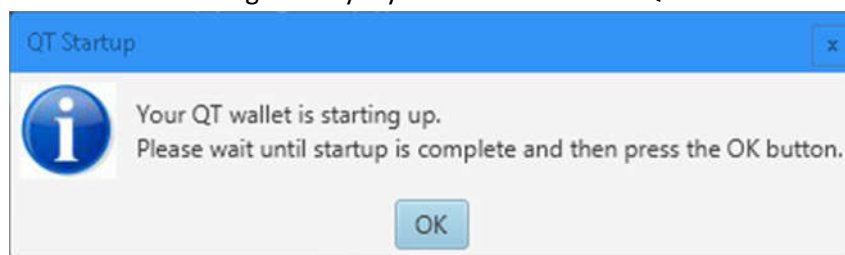


Next question if enabled is ask to delete. This will only popup when one of the files exists in the data folder.

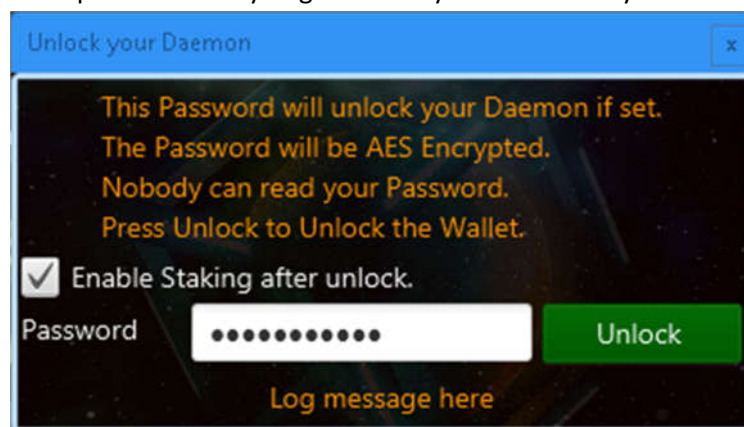


My choice is No.

Next message is only if you have chose Start QT Wallet



If the GUI is shown you can press Ok then you get Unlock your daemon if you have enabled this in Settings.



Here you can enter your wallet password that you have created when you made a new wallet.

This form will close when the daemon is unlocked.

The rest of the text is self-explanatory.

Stop all daemons.

Stop's all your enabled daemons.

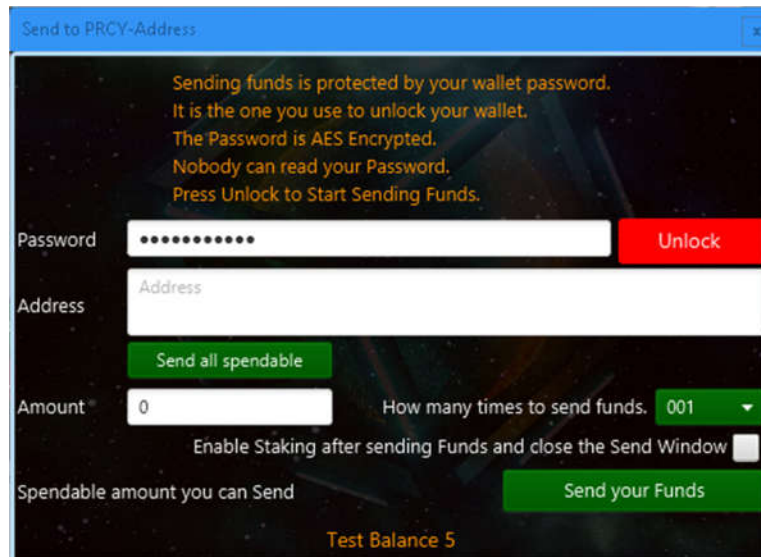
Disclaimer: You are using PRCY-Toolkit at your own risk.



7b. Sending Funds

Sending Funds is added to the Context menu for the selected daemon. See **6. Advanced Settings/Usage**

Sending funds to another wallet address in a loop or just 1 time.



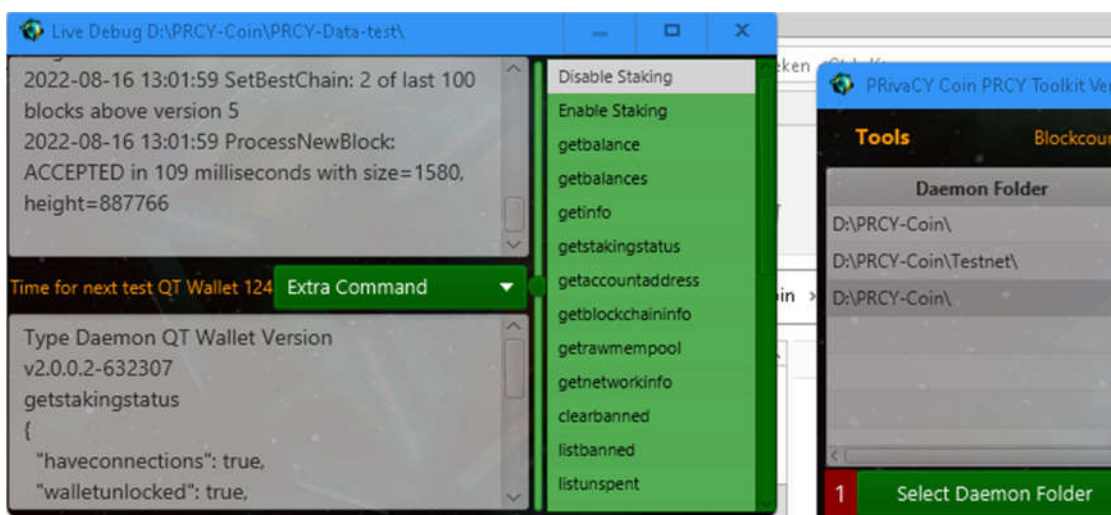
To make it possible to send funds, the daemon needs to be started using the toolkit; this will allow you to use the already saved password.

If the password is correct you can press unlock and enter the address you have to send some funds.

You also can send all Spendable Funds.

The rest of the text is self-explanatory.

7c. the Debug Form

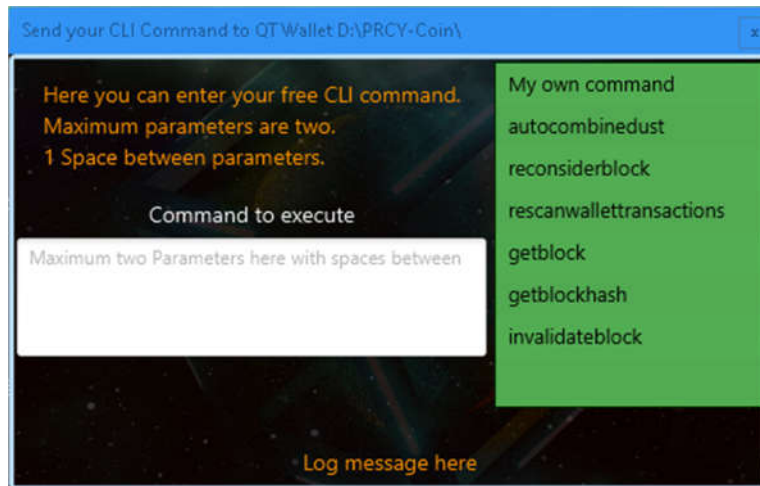


2 x clicks on the daemon if you would like to see the debug form.
The debug form can also send many commands that you might like.

Disclaimer: You are using PRCY-Toolkit at your own risk.



You also can send some CLI commands.



Just play with it and you will see.

I hope PRCY-Toolkit is useful for you and you enjoy it.

Disclaimer: You are using PRCY-Toolkit at your own risk.